

PWC 2026

PROMOTING WILDLIFE &
BIODIVERSITY CONSERVATION



PANAMA *wildlife*
conservation

UK & PANAMA CHARITY

Field Courses at
Liquid Jungle Lab

An aerial photograph of Isla Simca, a lush green island in Panama, during a sunset. The sun is low on the horizon, casting a golden glow over the ocean and the island's dense forest. The sky is filled with soft, colorful clouds. The island's coastline is irregular, with several small bays and peninsulas. A small building is visible on the island's surface.

ISLA SIMCA A PARADISE IN PANAMA

A 278-acre private island off Panama's Pacific coast, together with an additional 10,000 hectares (24,710 acres) of untouched coastline just a 25-minute boat ride from Coiba National Park, a UNESCO World Heritage Site

ISLA SIMCA

The owner changed the island's name from **Isla Canales de Tierra** to **Isla Simca**, after his father's automotive company.

SIMCA (Société Industrielle de Mécanique et Carrosserie Automobile) was an important French automobile brand, founded in 1934, known for popular models such as the Simca 1000.



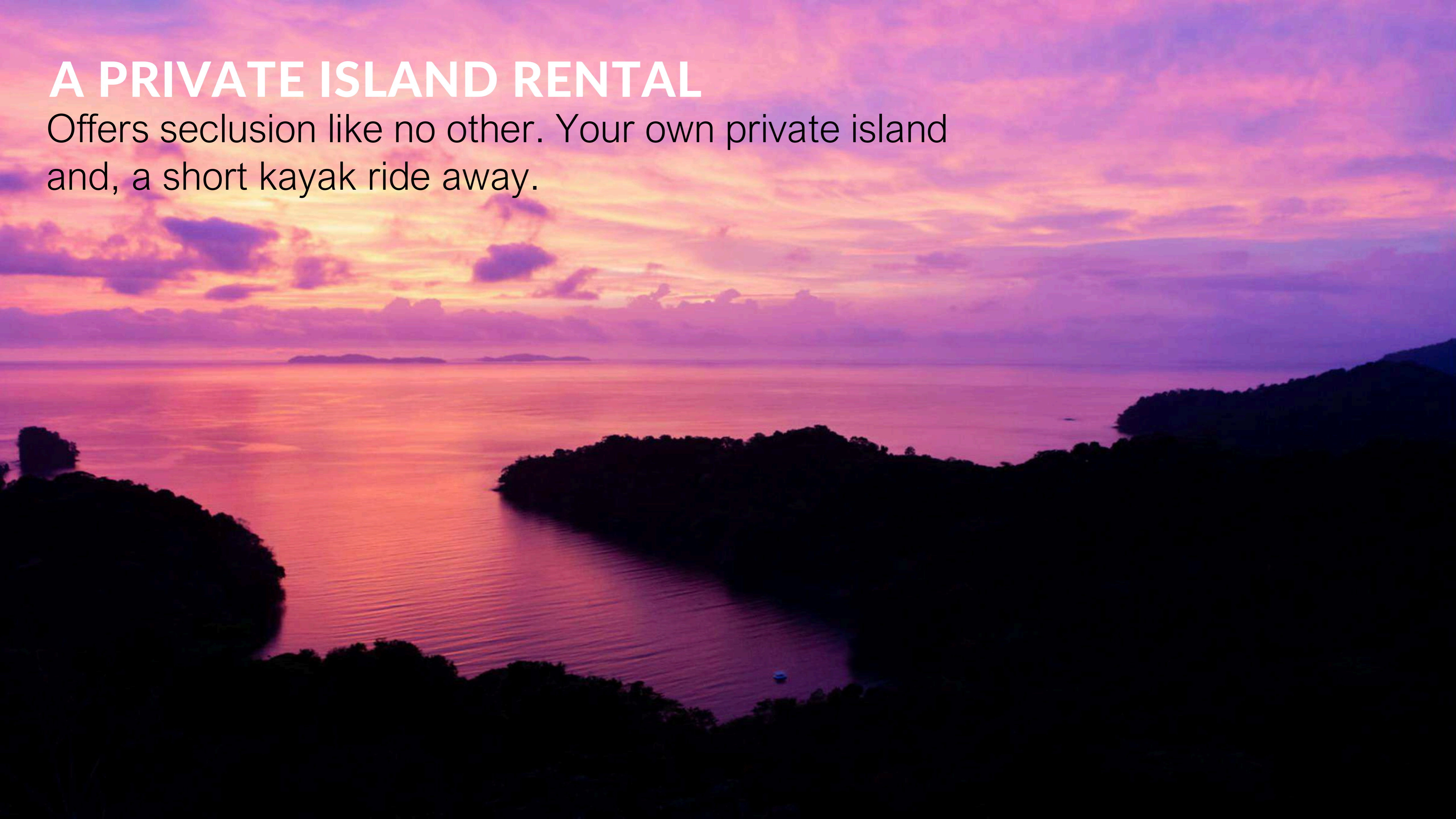


ISLA SIMCA (EST. 2000)

It took the owner 10 years and many millions of dollars to create this high-tech, mountaintop hacienda and **biological research station**, which is flush with items from his incredible collection of African art.

A PRIVATE ISLAND RENTAL

Offers seclusion like no other. Your own private island and, a short kayak ride away.

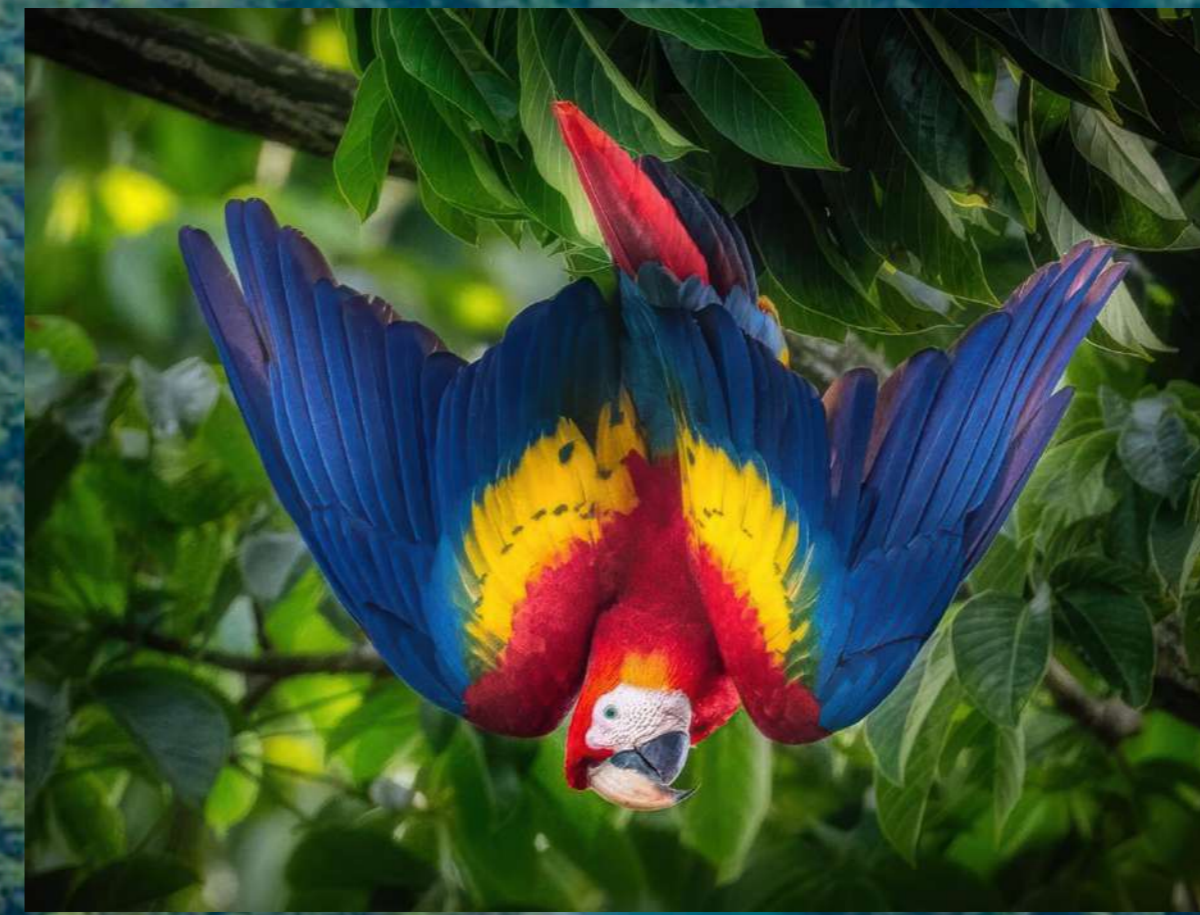


AMAZING BIODIVERSITY

Research Station



Probably no other island research station feels so far away or has such remarkable wildlife. There are rare bird species, plants, insects, howler monkeys, friendly large iguanas and white-tailed deer, corals, whales and many more...



LIQUID JUNGLE LAB AT ISLA SIMCA

Panama Wildlife Conservation is proud to partner with the property owner to welcome UK students to Panama for the first time, with exclusive Preferred Friends rates available to UK Universities



LUXURY PRIVATE ISLAND WITH RESEARCH FACILITIES

This island has a purposed build biological research station dedicated to biodiversity studies in Panama.

Distant from all civilisation, surrounded by empty seas and an archipelago that feels truly primordial.

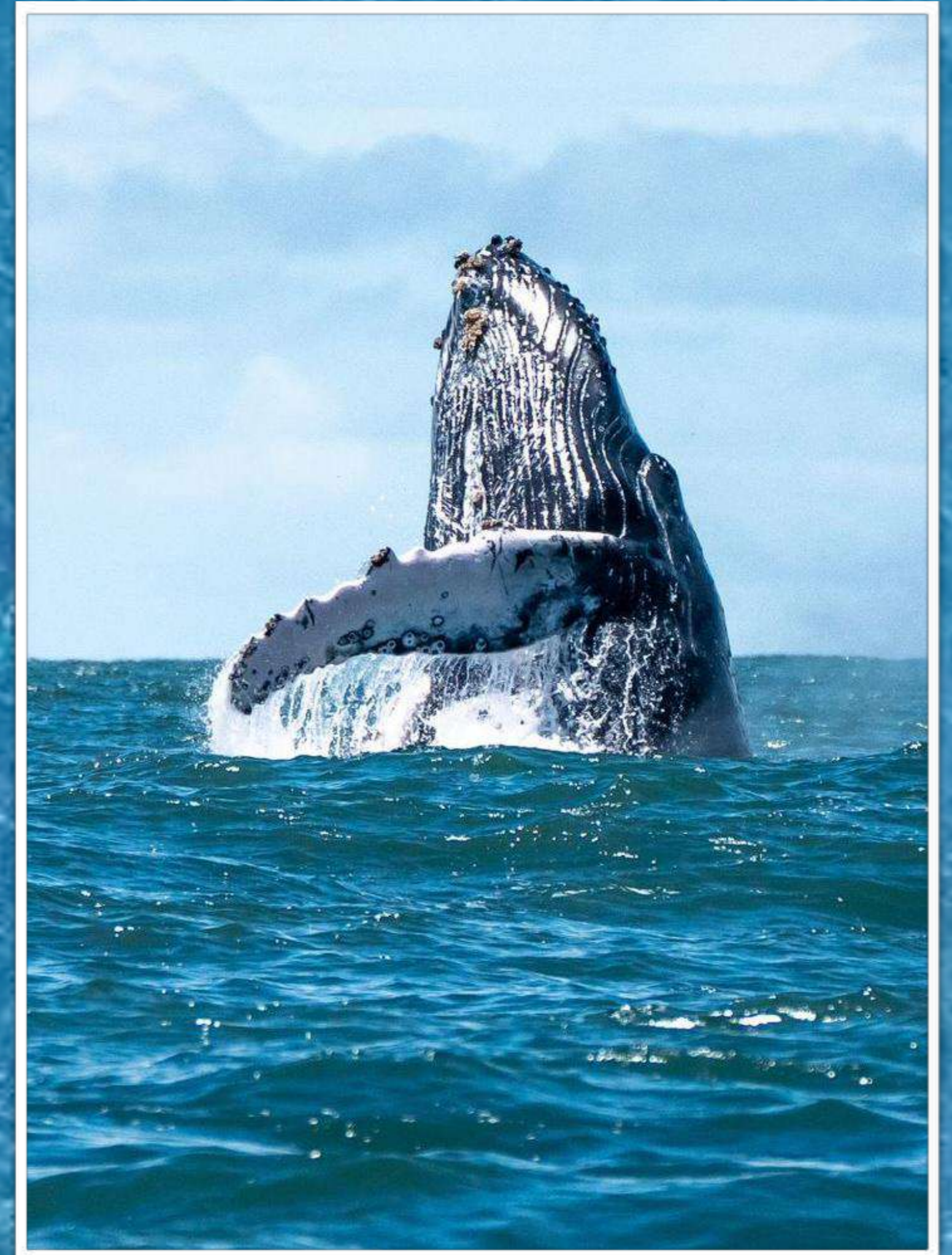


Offering an additional 10,000 private hectares on Panama's Pacific coast,
an unstudied, untouched expanse of pristine jungle

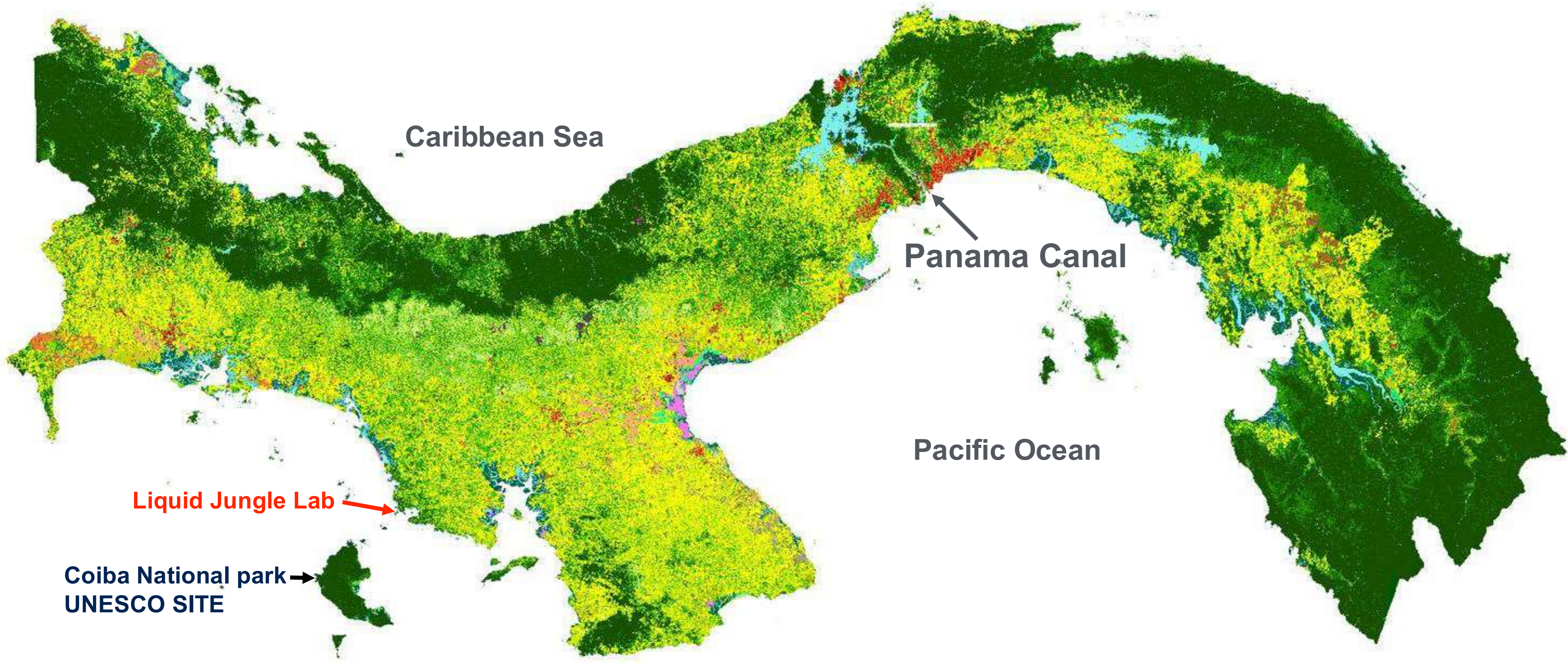


ONE OF THE BEST PLACES ON THE PLANET TO SEE WHALES

Whale watching in Coiba National Park is exceptional. Home to the only known area shared by both southern and northern hemisphere humpback whales, we are visited by the smaller northern population between December and April, while our southern visitors arrive to breed and raise their calves between **July to October**. Our two distinct and unique whale seasons means plenty of fabulous encounters.



LOCATION



Caribbean Sea

Panama Canal

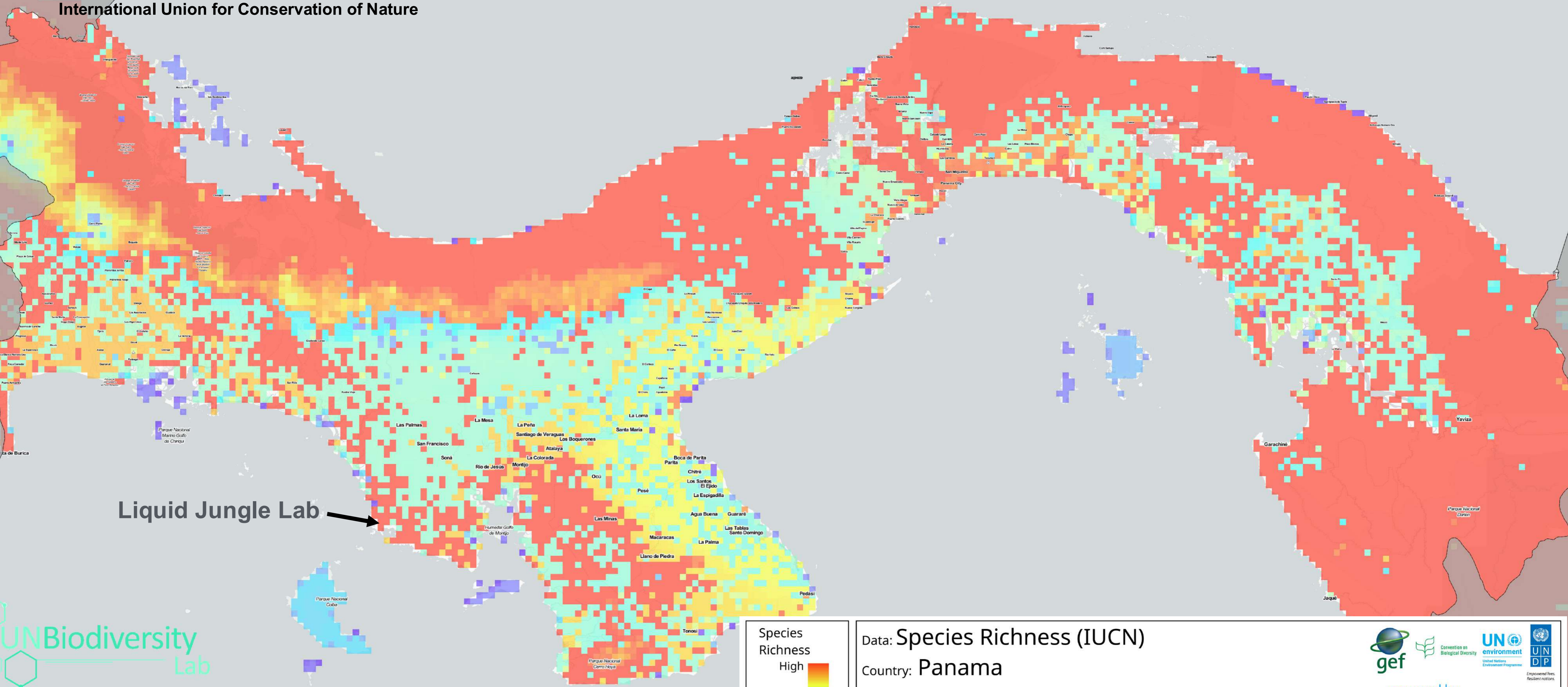
Pacific Ocean

Liquid Jungle Lab

Coiba National park
UNESCO SITE

SPECIES RICHNESS

International Union for Conservation of Nature

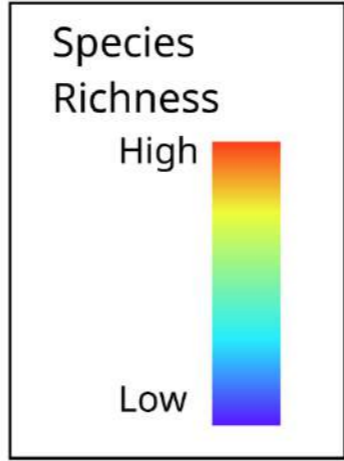


Liquid Jungle Lab



UNBiodiversity Lab

60 120 km



Data: Species Richness (IUCN)

Country: Panama

Data Sources:
The IUCN Red List of Threatened Species. Version 3. <http://www.iucnredlist.org>.
Flanders Marine Institute (2018). Maritime Boundaries Geodatabase: Maritime Boundaries and Exclusive Economic Zones (200NM), version 10.
Global Administrative Unit Layers (GAUL). 2015. UN Cartographic Unit

powered by

Projection: EPS



COIBA NATIONAL PARK

Why It's Unique

One of the largest marine protected areas in the Eastern Tropical Pacific.

UNESCO World Heritage Site (2005) for its extraordinary marine biodiversity and intact island ecosystems.

Once a penal colony, the island's isolation preserved pristine forests and reefs.

Home to endemic species like the Coiba Spinetail (*Cranioleuca dissita*), and a critical refuge for whale sharks, hammerhead sharks, humpback whales, and over 800 fish species.

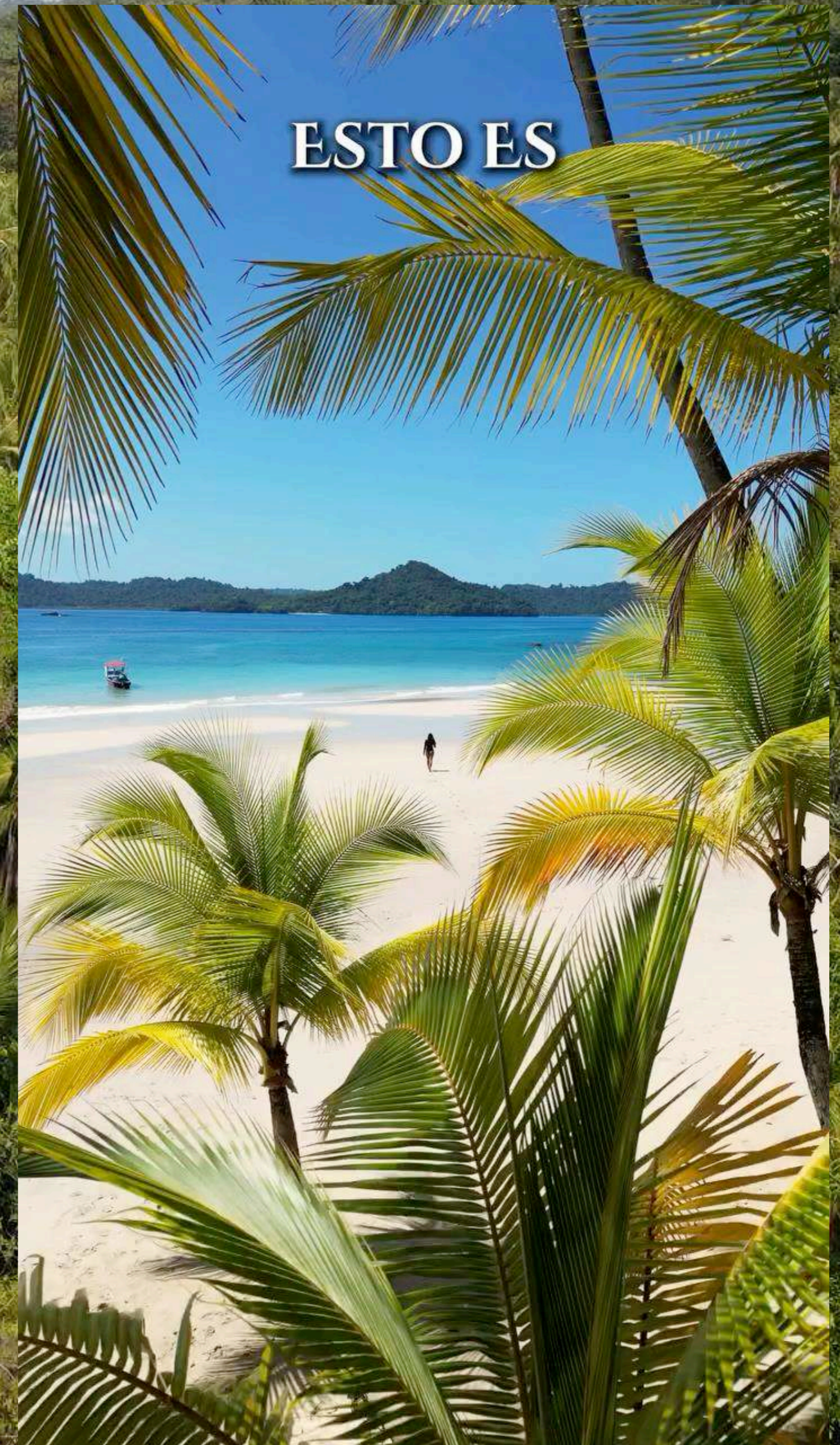
Part of the Eastern Tropical Pacific Marine Corridor linking Panama, Costa Rica, Colombia, and Galápagos.

COIBA NATIONAL PARK

Why It Matters

- Protects one of the most productive coral reef systems in the Eastern Pacific.
- Serves as a **natural laboratory** for studying climate resilience and island biogeography.
- A vital part of Panama's "**Blue Heritage**", supporting marine connectivity across Central America.

Only 25 min away from Isla Simca.

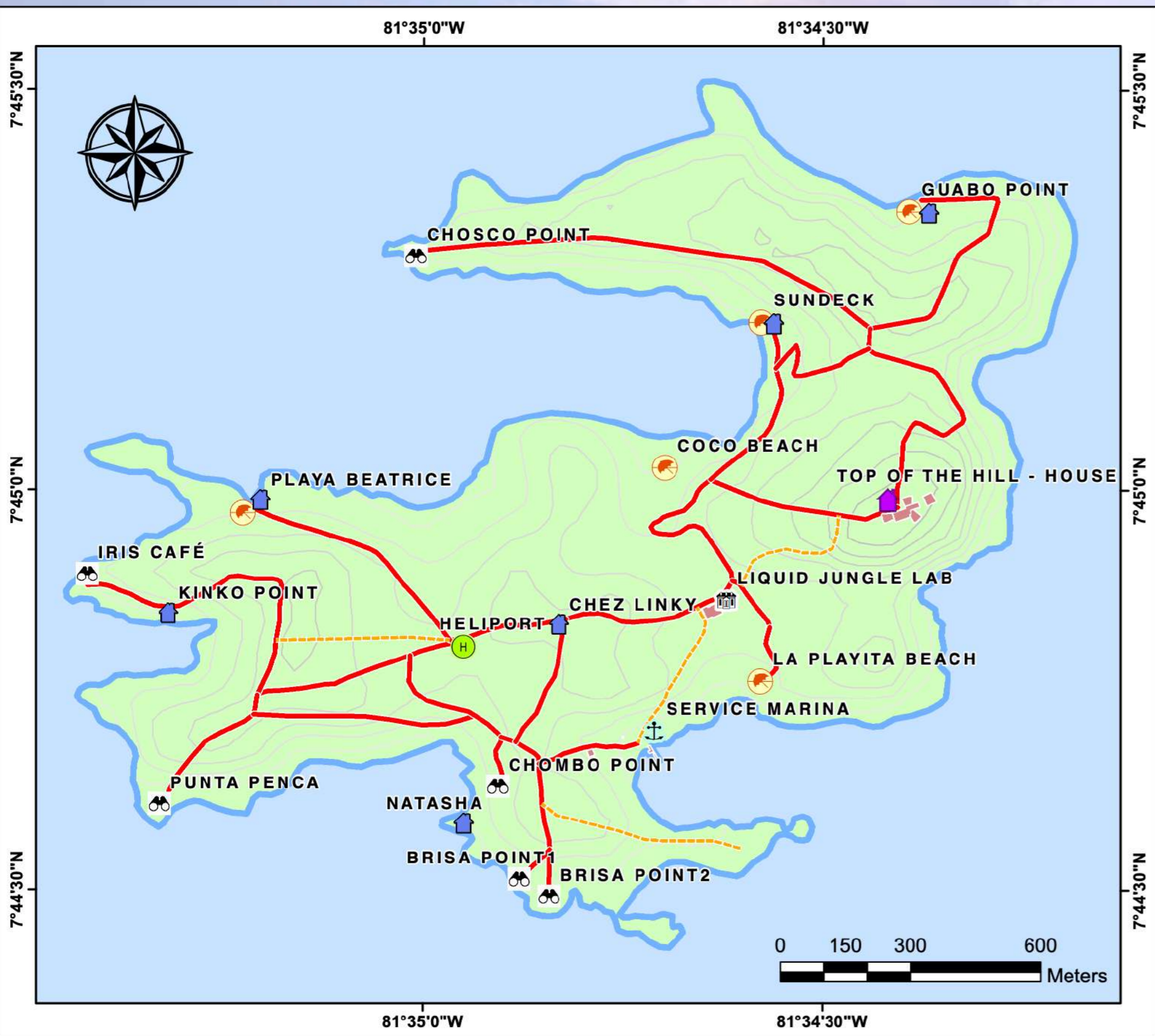




ISLA SIMCA

DETAILED LOCATION

Whether you are enjoying the miles of trails on your all-terrain vehicle, taking an early morning guided jungle walk, or kayaking into the dense mangroves, you are bound to be treated to sightings of rare wildlife.



40 miles of mountain tracks for ATV riding and horseback riding, long trails for guided jungle walks.



Students and visitor Security:

24/7 Helicopter service in case of emergency

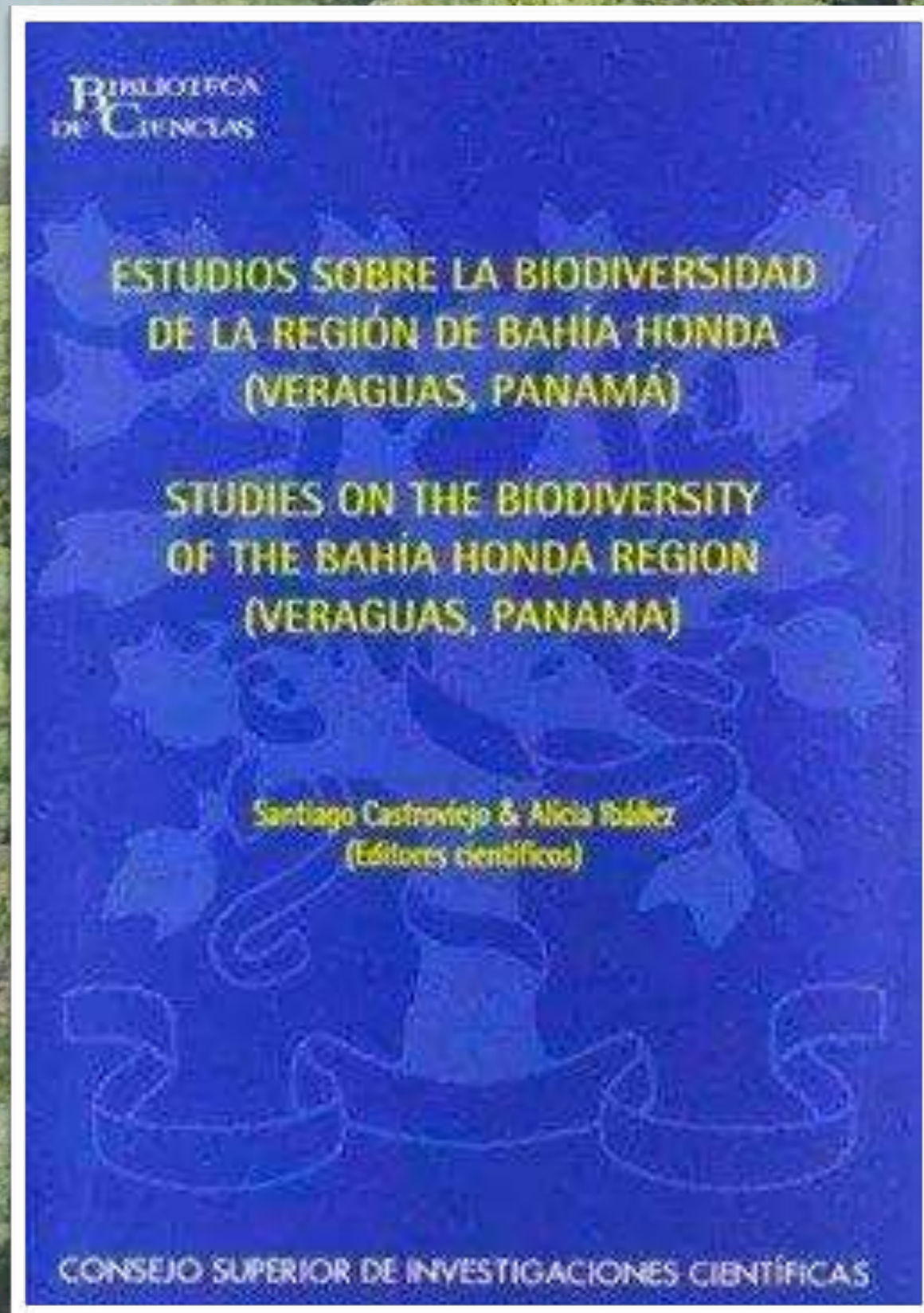
24/7 Nurse on site for rapid response

GETTING THERE OPTIONS

- Private landing strip
- Custom charter flights available
- 60 min flight or 6 h drive form Panama City



THE LJJ LAB



Book Available: **Studies on the Bahia Honda region's biodiversity by Santiago Castroviejo and Alicia Ibáñez**, offering diverse contributions on the area's rich flora and fauna, particularly within the Panamanian context. This work highlights the rich natural heritage of this specific Panamanian location, showcasing its unique ecosystems and species, which are typical of the high biodiversity found in Central America.



LIQUID JUNGLE LAB

A state-of-the-art biodiversity-research facility on Simca Island.



LIQUID JUNGLE LAB

The ocean and the jungles here are home to an exceptional variety of life. PWC through its collaboration with the owner makes the facility available to scholars from UK Universities, at special rates.



LJL FACILITIES



LJL FACILITIES

Photo: Nicolas Marin



LJL STUDENT FACILITIES

LJL FACILITIES



LJL FACILITIES



LJL STUDENT KITCHEN



LJL DINING AREA





LJL LIBRARY & CONFERENCE ROOM

LJL FACILITIES



LJL STUDENTS BEDROOMS

Accommodation for students in Dorm-style using bunk beds; standardised rooms, Variations of 6, 4, or 2 people per room.



LJL STUDENTS BEDROOMS

Accommodation for students in Dorm-style using bunk beds; standardised rooms, Variations of 6, 4, or 2 people per room.



LJL STUDENTS BEDROOMS

Accommodation for students in Dorm-style using bunk beds; standardised rooms, Variations of 6, 4, or 2 people per room.



LJL STUDENTS RESTROOMS



LJL BEDROOMS

Example of other available configuration for Student/Staff accommodation.



LJL BEDROOMS

Example of other available configuration for Student/Staff accommodation.



LJL STUDENTS BEDROOMS

Example of other available configuration for Student/Staff accommodation.



LJL BEDROOMS

Example of other available configuration for Student/Staff accommodation.



LJL FACILITIES



LJL BIOLOGY LAB



LJL BIOLOGY LAB



LJL FACILITIES



THE LAB ALSO INCLUDES:

- Use of Cocos beach and Playita beach.
- Local guide host with the group, we can organise night walks, bird watching, snorkel activities and hiking.
- Kayaks and Snorkel Equipment
- Internet 24/7
- Nurse 24/7



LJL ISLA SIMCA



LJL ISLA SIMCA



LJL ISLA SIMCA



Photo: Lucas Withinston

LJL ISLA SIMCA



LJL ISLA SIMCA



SIMCA HACIENDA



A truly special indulgence awaits our students: the UFO-like gazebo crowning Simca's main pavilion will be reserved for one magical afternoon of breathtaking, one-of-a-kind sunset watching, accompanied by food and drinks. As the sky transforms, the structure itself comes alive - shifting colours in harmony with music, while offering an awe-inspiring 360-degree panorama of ocean and jungle. The view stretches endlessly, untouched by any visible trace of human presence, inviting complete immersion in Panama's nature.

BOOK A FIELD COURSE AT ISLA SIMCA

Your support makes our work possible – 10% of your booking will go directly to PWC’s biodiversity conservation efforts

USD Exchange Rate 20 Dec 2025

Rate per Person per Night

1.34

Costings for Students

Low season

AMOUNT OF STUDENTS*

30 Students + 2
Panamanian

Accommodation (Breakfast, Lunch, Dinner Included)

£290

Costing for Staff

Rate per Person per Night

University Professor/Staff each (2 pax every 10 pax)

£83.88

AMOUNT OF STAFF

PWC Staff/Support - (4 Biologists)

£240

6 MAX

Sponsorship of Panamanian students - (2 pax)

£150

* Six (6) group minimum

Panama Wildlife Conservation is a Registered charity in
England & Wales (1165769) | Panama Legal Status No. 347-PJ-347
162 Westbourne Grove, W11 2RW, London, UK | P: +44 782 450 72772 | E: info@panamawildlife.org

SUMMARY OF WHAT'S INCLUDED

WHAT'S INCLUDED:

- 1 Boat Transfers in & out from Pixvae community (20 min each way)
- 2 Includes accommodation for students in Dorm-style using bunk beds; standardised rooms, variations of 6, 4, or 2 students per room.
- 3 Includes separate accommodation for professors/staff
- 4 Includes 3 meals (typical Panamanian food) + 2 snacks per person
- 5 24/7 Helicopter service in case of emergency
- 6 24/7 Nurse on site for rapid response
- 7 24/7 Internet Access
- 8 Hot water for showers
- 9 Kayaks and snorkel equipment - organised into individual groups, with larger groups split into 2-3 subgroups.
- 10 Mules for the check in and check out
- 11 40 miles of fully accesible walking paths inside the jungle
- 12 Exclusive use of Cocos and Playita beaches
- 13 Local guide host with the groups
- 14 Four (4) local biologists from **Panama Wildlife Conservation**
- 15 We can organise night walks, bird watching, snorkel activities, hiking and more.

Thank you!



BE PART OF OUR JOURNEY

 Spread the Word – Follow, share, and invite others to join us on social media.



@panama.wildlife.conservation



@panamawildlifeorg

SCAN TO SUPPORT OUR
CONSERVATION WORK



info@panamawildlife.org

www.panamawildlife.org

162 Westbourne Grove, London